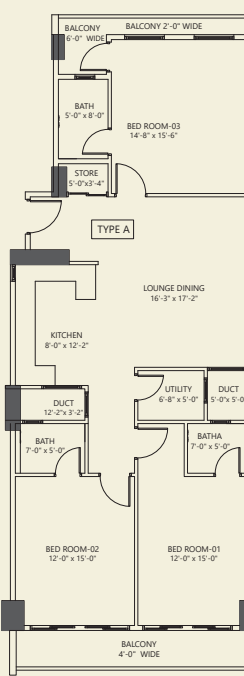


# 3 BEDROOMS APARTMENT TOTAL AREA: 2234 Sq. Ft

## TYPE-A

MODE OF PAYMENT	AMOUNT
ON BOOKING (30 %)	9,047,700
30 MONTHLY INSTALLMENTS ( 603,180 x 30)	18,095,400
ON POSSESSION (10 %)	3,015,900
TOTAL AMOUNT (UNIT PRICE)	30,159,000

KEY PLAN:



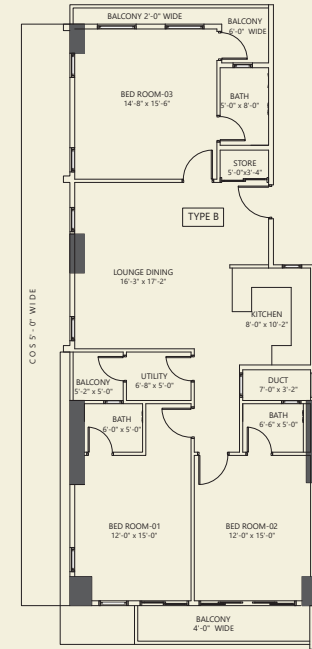
www.hakimibuilders.com

# 3 BEDROOMS APARTMENT TOTAL AREA: 2165 Sq. Ft

## TYPE-B

MODE OF PAYMENT	AMOUNT
ON BOOKING (30 %)	8,768,250
30 MONTHLY INSTALLMENTS ( 584,550 x 30)	17,536,500
ON POSSESSION (10 %)	2,814,500
TOTAL AMOUNT (UNIT PRICE)	29,227,500

KEY PLAN:



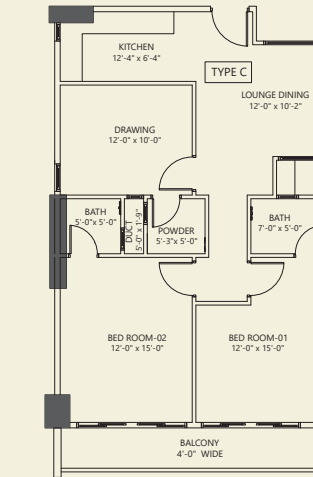
www.hakimibuilders.com

# 3 BEDROOMS APARTMENT TOTAL AREA: 1513 Sq. Ft

## TYPE-C

MODE OF PAYMENT	AMOUNT
ON BOOKING (30 %)	6,127,650
30 MONTHLY INSTALLMENTS ( 408,510 x 30)	12,255,300
ON POSSESSION (10 %)	2,042,550
TOTAL AMOUNT (UNIT PRICE)	20,425,500

KEY PLAN:



Builders & Developers:



www.hakimibuilders.com

Head Office:  
44-C, 3rd Floor, Adjacent Dubai Islamic Bank,  
Badar Commercial Street 10, Phase V-Ext, DHA, Karachi-Pakistan.  
☎ 0300 1 (HAKIMI) 425 464

Site Office:  
A50, Main Jinnah Avenue,  
Bahria Town Karachi.  
☎ 0300 1 (FAKHRI) 325 474



# FAKHRI HEIGHTS



## PAYMENT PLAN

Builders & Developers:



Architect:



Lokhandwala Properties



Visualized By:







**FAKHRI**  
HEIGHTS

*Luxury is  
18-Storeys High!*

*The most beautiful things in life are not to be heard about, nor read about, nor seen but to be lived!*



**GROUND FLOOR PLAN**



**2ND TO 18TH TYPICAL FLOOR PLAN**

